

Investigation report n° 28467

Bové RJM Overpelt, 26 feb 2016

Attn: Mr. Ralf Kotalla
Labor Kotalla
Kätzling 2
D-72401 Haigerloch
GERMANY

Object: Jar with white flowers on a brown background.

Identification :722A 15,767-7

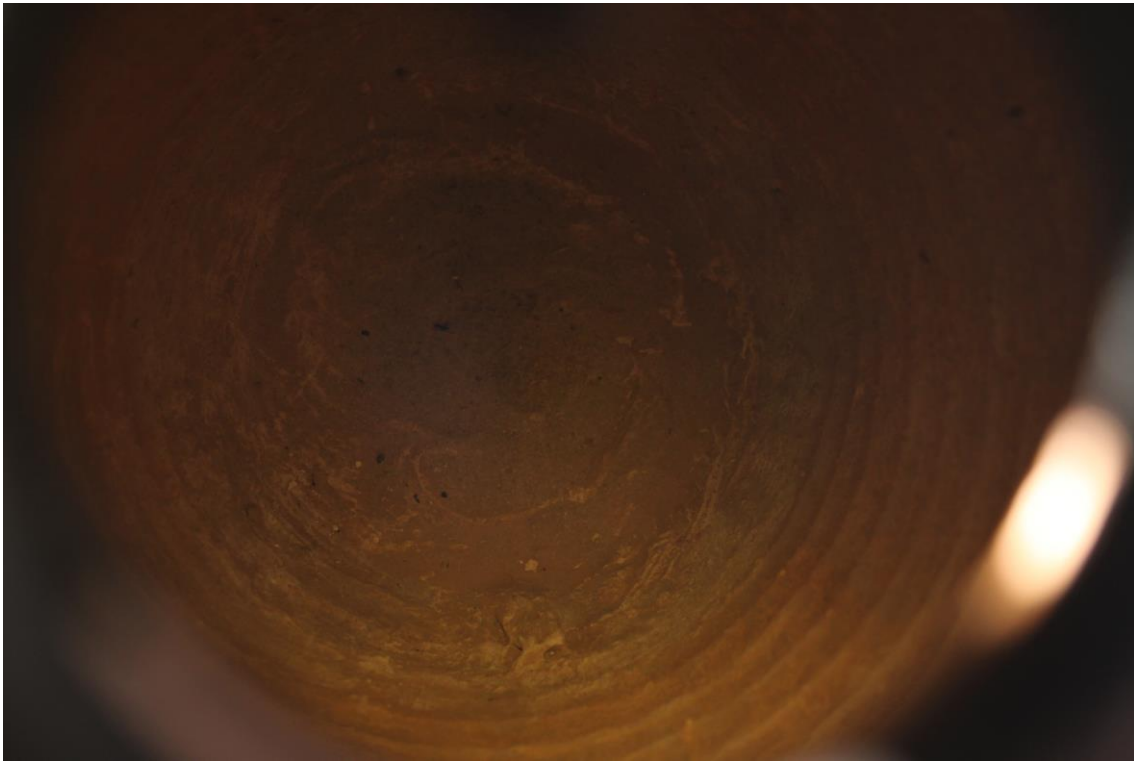
Description: Chinese jar with crème ground and flowers. No marks.



Observations:



Hand made foot rim



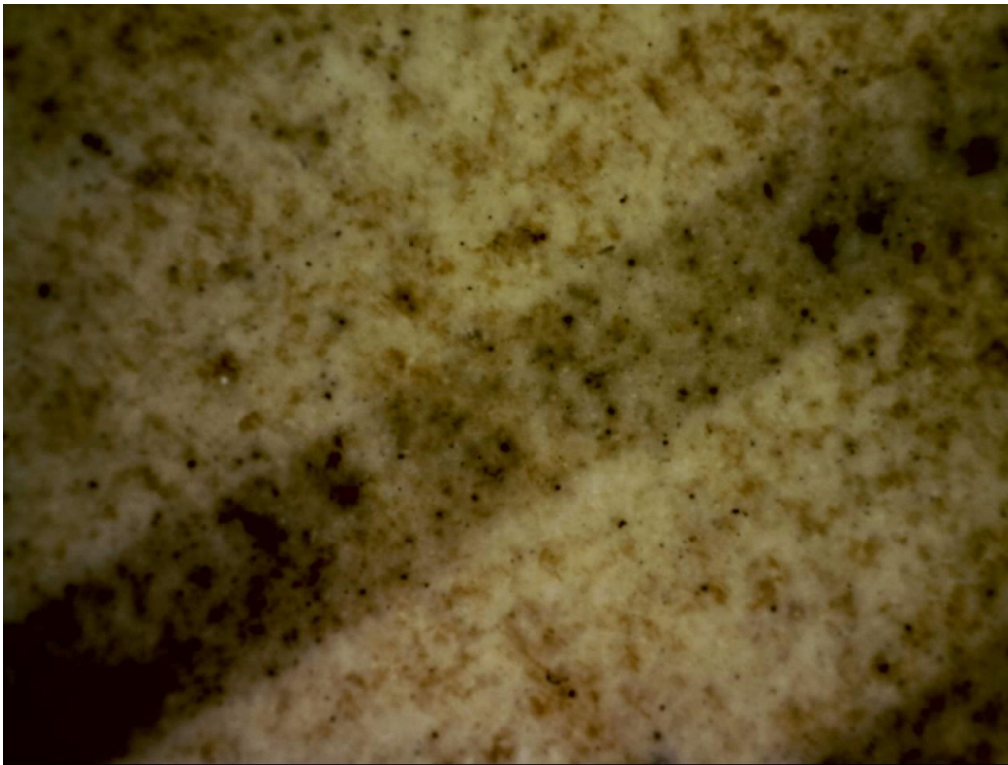
Hand turned body, inner side and bottom



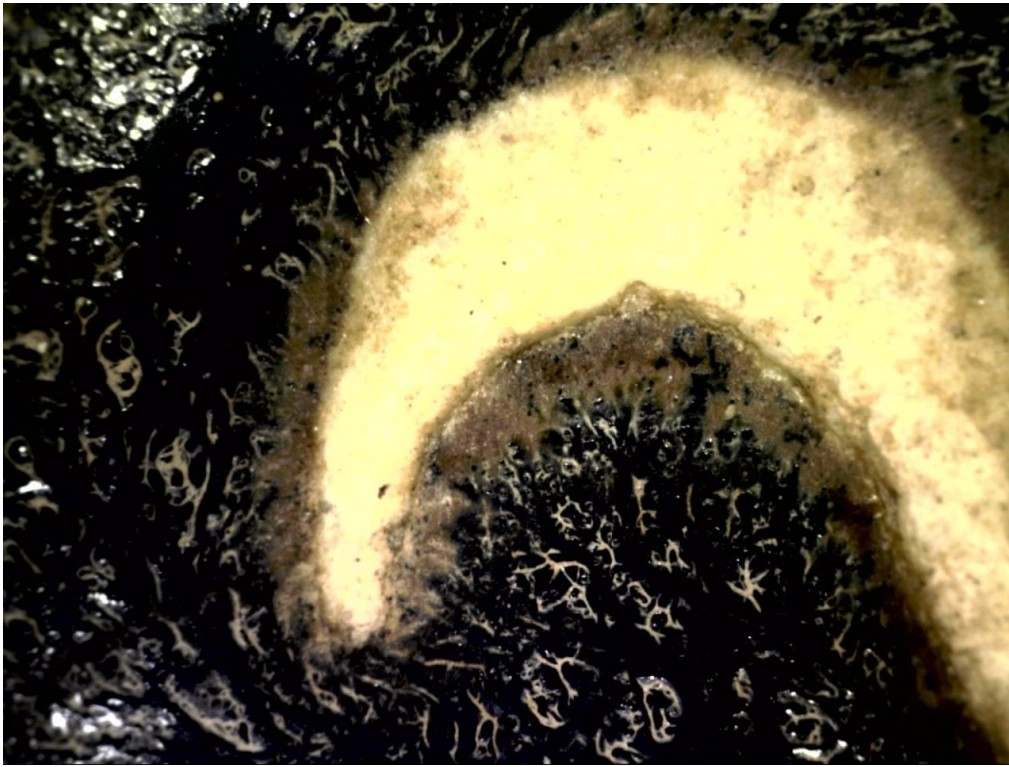
Hand painted design in monochrome brown (MnO₂), design engraved (cut glaze technique)



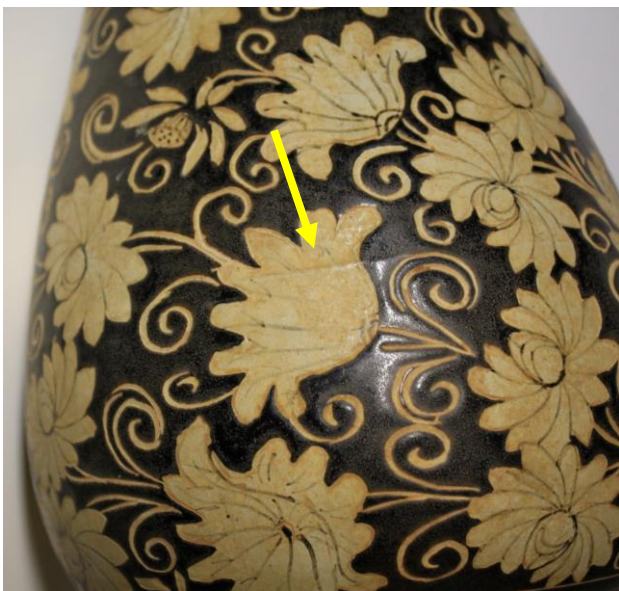
Glazed to the inner top of the neck.



Impurities and cracks in the glaze. (the dark ones are iron spots)



Engravings to the ground into the brown colored design.



Horizontal hand made manufacturing.



Inner side : rest material of the horizontal combination

Core analysis by ICP-OES (fused dissolution HF HClO₄)

Ident	% SiO ₂	% Al ₂ O ₃	% Fe ₂ O ₃	% K ₂ O	% Na ₂ O	% CaO	% MgO
28465	75,8	18,4	0,66	2,74	1,03	0,97	0,40

References:

Period	% SiO ₂	% Al ₂ O ₃	% Fe ₂ O ₃	% K ₂ O	% Na ₂ O	% CaO	% MgO
Ming	71,6 - 76,0	18,3 - 21,2	0,7 - 1,6	2,8 - 4,2	0,15 - 2,0	0,3 - 1,2	0,15 - 0,3
Song	75 - 77,8	16,3 - 18,7	0,6 - 1,1	2,3 - 3,2	0,4 - 2,5	0,4 - 1,3	0,1 - 0,6
Qing	65,5 - 70,3	23 - 30	0,7 - 1,35	1,3 - 3,4	0,3 - 2,5	0,3 - 1,6	0,1 - 0,3

Remarks:

Stone ware for daily use with typical incised designs in brown and white.

Type, method of manufacture and painting style were in use in the Northern Song dynasty(12th century) and belongs to the Tz'u-Chou type ceramics.

Also confirmed by the chemical composition of the core material.

Overpelt, 25 feb 2016



Raymond Bové

